

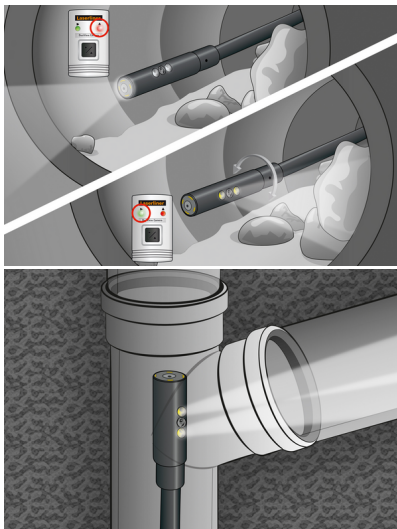
## VideoFlex G4 Duo



### Professional video inspection system with exchangeable views

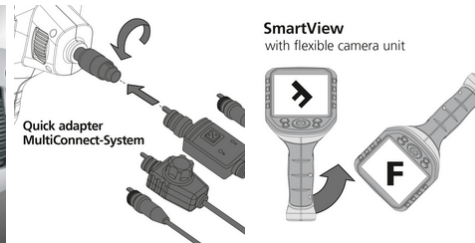
This professional video inspection system allows hard-to-reach places, such as in pipes, wall cavities and motor vehicles to be visually inspected. Intuitive rotation of the base unit provides the user with easy spatial orientation. The efficient LED object illumination ensures reliable image capture, even in poor conditions. The true colour reproduction provides an extremely realistic image. Front and side cameras provide a quick change of view at the touch of a button. Details can be clearly captured using the zoom function. The ergonomically designed device fits well in the hand and is also comfortable to use, even after extended periods of work. With eight languages and an exchangeable camera unit, this device can be used in many different application areas. Images and videos can be saved on an SD memory card and analysed via the USB-C interface.

- Effective problem localisation behind or in objects, walls, pipes, cavities
- SmartView: Intuitive rotation of the base unit for easy spatial orientation
- Quick change of view at the touch of a button thanks to front and side cameras



#### TECHNICAL DATA

<b>Diameter Camera Head</b>	10 mm
<b>Camera Resolution</b>	640 x 480 pixels
<b>Field of View (FOV)</b>	57°
<b>Depth of Focus (DOF)</b>	Front: 3 ... 5 cm / Side: 1 ... 5 cm
<b>Screen Type</b>	3,5" Colour TFT
<b>Display Resolution</b>	320 x 240 pixels
<b>Image Format</b>	JPEG
<b>Length of Probe</b>	1 m
<b>Illumination</b>	5 brightness levels
<b>Digital Zoom</b>	2x digital zoom in 20% increments
<b>Memory</b>	Micro-SD memory card up to 16 GB
<b>Port</b>	USB
<b>Ports</b>	USB type C RCA video output
<b>Power Supply</b>	USB type C 5V / 2A Li-ion battery pack 3.7V / 2.8Ah
<b>Dimensions (W x H x D)</b>	181 mm x 207 mm x 96 mm
<b>Weight</b>	342 g (incl. battery pack)



#### SCOPE OF DELIVERY



Item No. 082.244A GTIN (EAN) 4021563715985 SU 2