

## PocketCross-Laser 2G



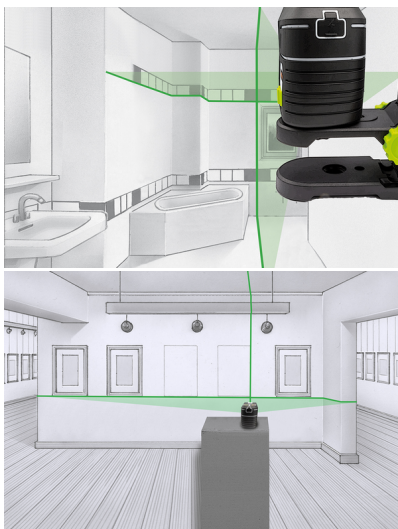
Practical cross line laser with green laser technology – wide range of accessories for many different uses

This cross-line laser projects a highly visible green laser cross for precise horizontal and vertical alignment of objects. It also has a manual slope function for creating gradients. A wide range of accessories means this laser is an extremely practical and versatile tool for precision alignment jobs. The PocketWallHolder, a multi-functional, height-adjustable, magnetic bracket, is suitable for attaching the laser to walls, metal items, and tripods with a 1/4" or 5/8" thread.

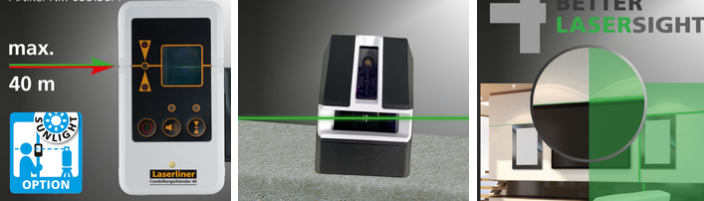
- Accurate horizontal and vertical alignment of objects
- Good visibility through green laser technology
- Easy alignment of slopes with manual tilt function
- Height-adjustable, magnetic, multi-function bracket with 1/4" and 5/8" thread for attaching to walls, metal items and tripods
- Magnetic target plate with stand, nail hole and dual scale – perfect for working close to ceilings
- Laser enhancement glasses for optimum visibility of laser lines with the human eye
- Time-saving automatic alignment
- Integrated hand-held receiver mode for outdoor applications

### TECHNICAL DATA

|                               |   |
|-------------------------------|---|
| <b>Self-Levelling Range</b>   | ± 3.5° (horizontal)   |
| <b>Accuracy</b>               | ± 0.3 mm / m  |
| <b>Levelling</b>              | automatic   |
| <b>Visibility (Typical)*</b>  | 55 m  |
| <b>Laser Wavelength</b>       | 515 nm  |
| <b>Laser Class</b>            | 2 / < 1 mW (EN 60825-1:2014/ A11:2021 / EN 50689:2021)  |
| <b>Power Supply</b>           | Li-ion battery pack 3.7V / 3.6Ah / 13.32Wh<br>Power adapter 5V/DC / 2A                            |
| <b>Operating Time</b>         | approx. 15 hours  |
| <b>Operating Conditions</b>   | 0°C ... 50°C, max. humidity 80% rH, no condensation, max. working altitude 4000 m above sea level |
| <b>Storage Conditions</b>     | -20°C ... 70°C, max. humidity 80% rH  |
| <b>Dimensions (W x H x D)</b> | 91 mm x 82 mm x 60 mm x (incl. battery pack / without accessories)                                |
| <b>Weight</b>                 | 334 g (incl. battery pack)  |



Optional: CombiRangeXtender 40  
Artikel-Nr.: 033.35A



### SCOPE OF DELIVERY



Item No. 036.710A

GTIN (EAN) 4021563725212

SU 2